

Lot Certificate of Analysis

Protein Name: A/Kansas/14/2017 rHA H3

Catalog Number: H3-20153

General Information: 6X-His Hemagglutinin Trimer; Expressed in HEK Expi293; Purified by IMAC; Suspended in Phosphate Buffered Saline with 0.1% Azide

Quantity: 100 µg

Buffer: **PBSA:**
Potassium Dihydrogen Phosphate 0.144g/L, Sodium Chloride 9g/L,
Disodium Phosphate 0.795g/L; 0.1% Azide; pH 7.3-7.5

MW: ~270 kDa (native trimer)
~80-90 kDa (monomer) (SDS-PAGE)

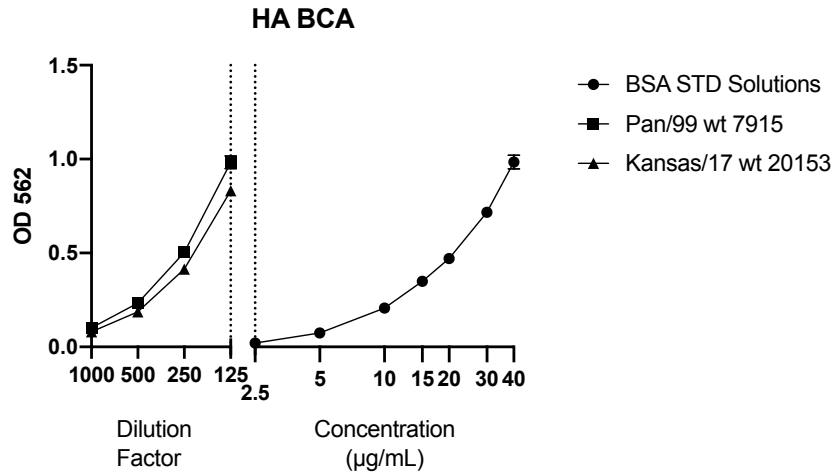
Purity: ≥95%

Stability: At least 1 year at -80°C

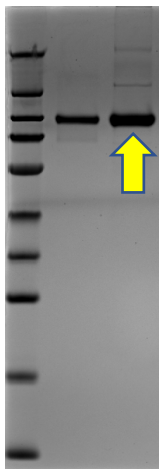
Storage: -80°C; Avoid Freeze/Thaw Cycles

Sequence: **EPI1146345**
MKTIIALSCILCLVFAQKIPGNDNSTATLCLGHHAVPNGTIVKTTNDRIEVTNATELVQNSSIGEIC
DSPHQILDGENCTLIDALLGDPQCDGFQNKKWDLFVERNKAYSNCYPYDVPDYASLRSLVASSG
TLEFNNEFNWAGVTQNGTSSSCIRGSKSSFFSRLNWLTHLNSKYPALNVTMPNNEQFDKLYI
WGVHHPGTDKDQISLYAQSSGRITVSTKRSQQAVIPNIGSRPRIRDIPSRSIYWTIVKPGDILLINS
TGNLIAPRGYFKIRSGKSSIMRSDAPIGKCKSECITPNGSIPNDKPFQNVNRITYGACPRYVKQSTL
KLATGMRNVPERQTRGIFGAIAGFIENGWEGMVDGWYGFRHQNSEGRGQAADLKSTQAAID
QINGKLNRLIGKTNEKFHQIEKFSEVEGRIQDLEKYVEDTKIDLWSYNAELLVALENQHTIDLTDS
EMNKLFEKTKKQLRENAEDMGNGCFKIYHKCDNACMGSIRNGTYDHNVYRDEALNNRFQIKG
VELKSGYKDWILWISFAISCFLLCVALLGFIMWACQKGNIRCNICI

BCA Curve with Plotted Points:

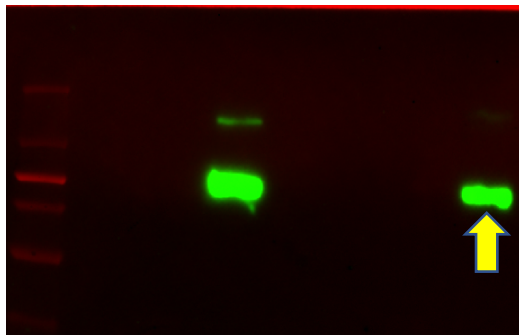


Coomassie Gel with BSA Standard:



Lane 1: Ladder
 Lane 2: Pan/99 wt 7915 H3-7915-003 1µg
 Lane 3: Kansas/17 wt 20153 H3-20153-004 1µg

Western Blot with HA Standard:



Lane 1: Ladder
 Lane 2: H1 + CA/09 wt H1N1 STD 1µg
 Lane 3: Blank
 Lane 4: H3 + Sing/16 wt H3N2 STD 1µg
 Lane 5: Blank
 Lane 6: Pan/99 wt 7915 H3-7915-003 1µg
 Lane 7: Blank